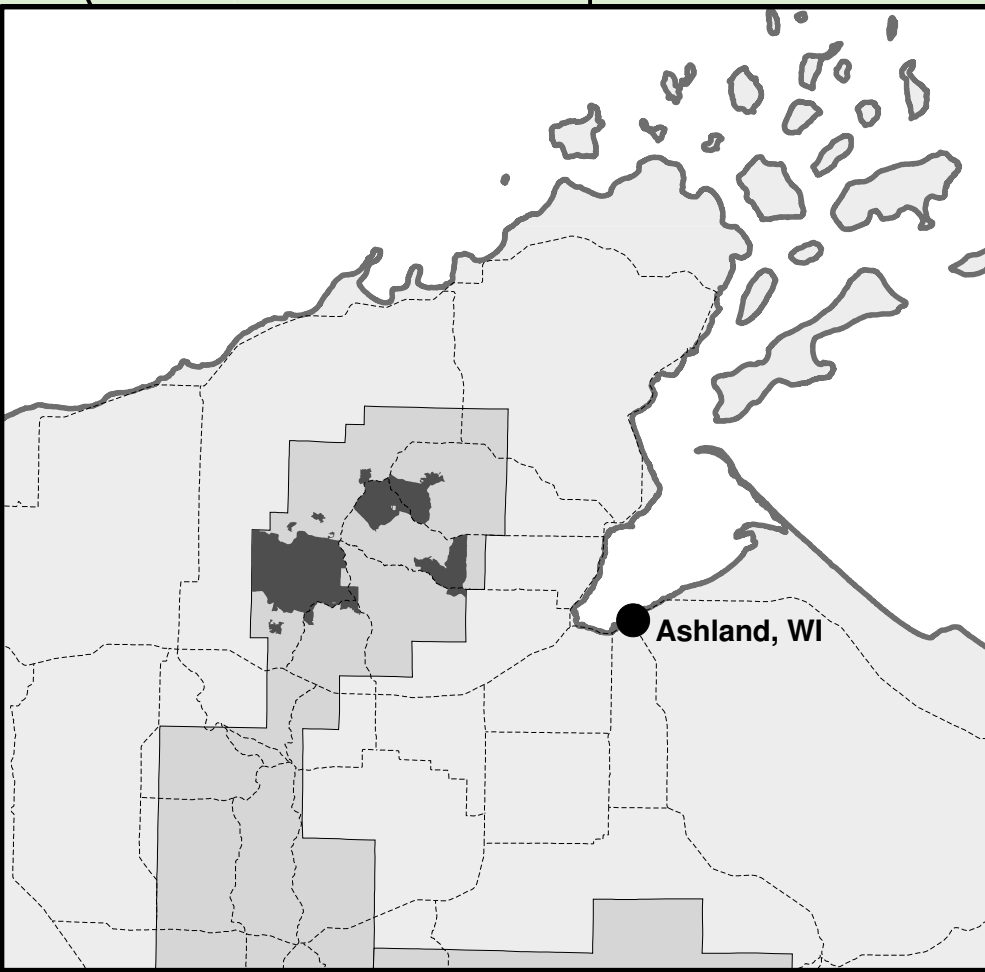
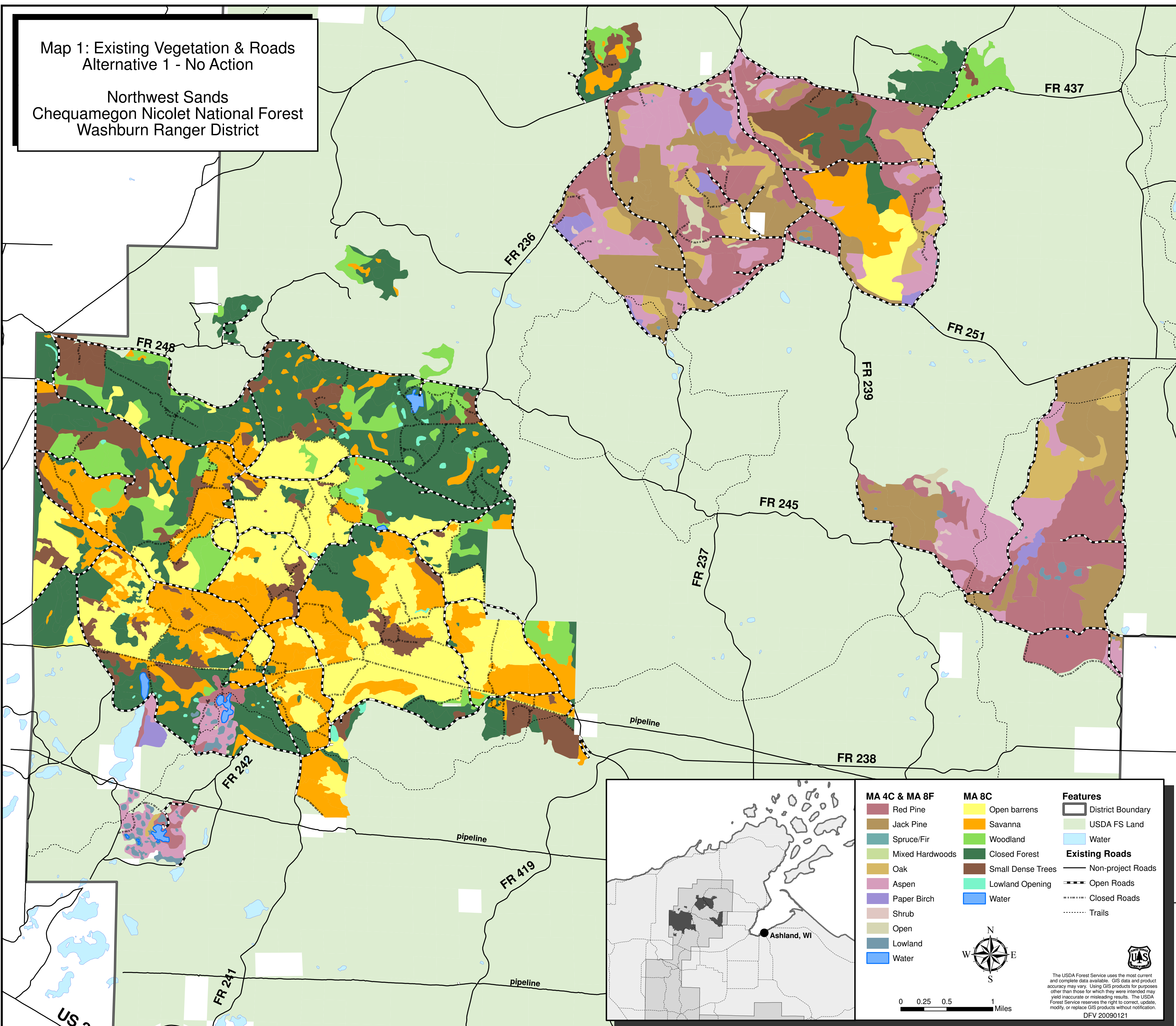


Map 1: Existing Vegetation & Roads
Alternative 1 - No Action

Northwest Sands
Chequamegon Nicolet National Forest
Washburn Ranger District



MA 4C & MA 8F		MA 8C	Features
Red Pine	Jack Pine	Open barrens	District Boundary
Spruce/Fir	Mixed Hardwoods	Savanna	USDA FS Land
Oak	Aspen	Woodland	Water
Paper Birch	Shrub	Closed Forest	Existing Roads
Open	Lowland	Small Dense Trees	Non-project Roads
Water	Water	Lowland Opening	Open Roads
		Water	Closed Roads
			Trails

0 0.25 0.5 1 Miles

U.S. Forest Service

The USDA Forest Service uses the most current and complete data available. GIS data and product accuracy may vary. Using GIS products for purposes other than those for which they were intended may yield inaccurate or misleading results. The USDA Forest Service reserves the right to correct, update, modify, or replace GIS products without notification.
DFV 20090121